

*godrej* interio

**SPACE IS LIMITED....**

**SPACE IS AT A PREMIUM....**

**HENCE SPACE NEEDS TO BE  
OPTIMALLY UTILISED.**

# OUR STUDY.... THE STATE OF SOME OFFICES





## PROBLEMS SEEN:

- Vertical space is un-utilized
- Highly unorganized storage
- Space going waste on account of Bad space planning

# INTRODUCING GAIN

# ABOUT GAIN

**SPACE** has become a scarce resource and is available only at a premium. It is therefore very essential that it should be optimally used – use every bit available – INCLUDING **VERTICAL SPACE**.

**GAIN** is the perfect product that will ensure optimal utilization of space. It is a Full Height Storage unit available in several size options and finish options.



# GAIN WITH METAL DOOR



Full height GAIN with OHSU.



Adjustable shelves to suit different needs



450 mm Wide Main, Add-on and a 900  
mm Wide Unit



Over-Head Storage Unit with Lock





**GAIN..... MAKING USE OF VERTICAL SPACE**

# TARGET AUDIENCE

GAIN has been designed keeping in mind the needs of Education segment and Indian Corporate.



# FEATURES

- COMPLETE USE OF SPACE

GAIN makes use of **complete vertical space**. It also has a Overhead unit also which ensures optimum use of available space.

- SEVERAL SIZE OPTIONS

To meet the varied requirements if the customers and their varied office spaces, GAIN can be offered in **6 Different Widths** i.e. 400, 450, 500, 800, 900 and 1000 mm.

# FEATURES

- MAIN & ADD ON

GAIN is available in **Main and Add-on** Concept thereby allowing the customer to make use of all the space available for storage

- ALL STEEL & WOOD-STEEL COMBINATION

GAIN is available in a **ALL STEEL** combination as well as **WOOD & STEEL COMBINATION**, thus giving the customer to choose from. Metal Unit offers absolute sturdiness whereas the Wood & Steel Combination offers the needed aesthetics

# FEATURES

- COLOR OPTION

There are **2 color options** (Pure RAL White and Matt Taupe White) in the All Metal

As well as the Wood & Steel Combination (Highland Pine and Silver Oak)

(Wood and Steel Combination has a metal body and shelf. Doors are in PLB)

- SEVERAL SIZE OPTIONS

To meet the varied requirements of the customers and their varied office spaces,

GAIN can be offered in **6 Different Widths** i.e. 400, 450, 500, 800, 900 and 1000 mm.



# FEATURES

- EASE OF IDENTIFICATION

Label Holders can be put up for Easy access and retrieval of files and documents.

(Label Holders shall be a service accessory and will have to be indented for separately)

# GAIN COLOR OPTIONS

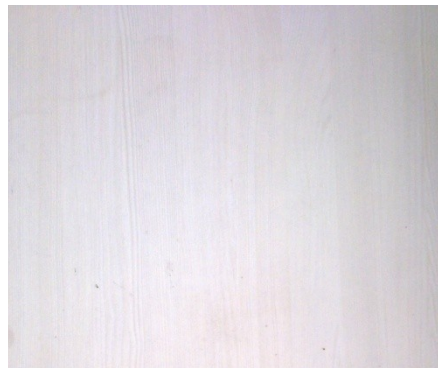
## GAIN : ALL METAL

- MATT TAUPE WHITE
- PURE RAL WHITE

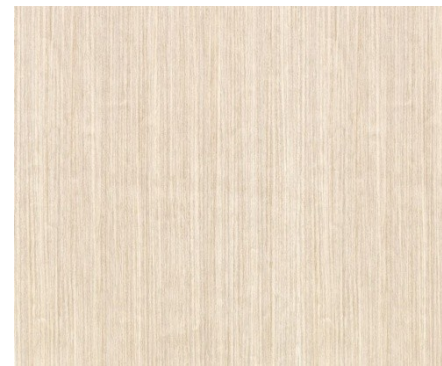


## GAIN : WOOD & STEEL COMBINATION

- HIGHLAND PINE
- SILVER OAK



Highland Pine



Silver Oak

Please refer the true samples before finalizing the order

# BAAN CODE & PRICING

While Booking GAIN, PI book the number of MAIN & ADD ON bodies. Separately book the total number of doors i.e. Wooden Door or Metal Door. There shall be no concept of Main /

Add on Doors

PI refer to the BAAN CODE Sheet attached for all the codes.

## GAIN : BODY

STGNFLB400401

FL – Floor Unit / OH – Overhead Unit , B – BASE UNIT / A – Add on unit

400 – Width Size, 401 – Pure RAL White / 402 – Matt Taupe White

# BAAN CODE & PRICING

Pl refer to the BAAN CODE Sheet attached for all the codes.

## GAIN : WOODEN DOOR

STGNFL**WDDR**80402

**WDDR** – Wooden Door

**80** – 800 mm Width

## GAIN : METAL DOOR

STGNFL**MTDR**40401

**MTDR** – Metal Door

**40** – 400 Width Door

## DELIVERY

Lead-time will be 4 weeks ex-works from date of booking. Branch has to book the RPLs manually at their end.

## ASSEMBLY & SERVICE

The assembly guideline sheet and details about service components with coding & pricing will be circulated by service department separately.





Initiative by Godrej Interio

**THANK YOU !!!**