

**Research shows today's Indian  
workforce is increasingly aspiring.....**

**Aspiring for workspaces which.....**



**Facilitate focused as well as team work...**

---

**Aspiring for workspaces which.....**



**Can work with global teams...**

---

**Aspiring for workspaces which are.....**



**Clutter-free...**

---

**Aspiring for workspaces which are.....**



**Barrier-free...**



**Aspiring for workspaces which are.....**



**Relaxed...**

---



**Today's Indian workforce is increasingly aspiring.....**

**Aspiring for workspaces which are.....**

**Relaxed**

**Barrier-free**

**Clutter-free**

**Work with  
global teams**

**Facilitate focused as  
well as team work...**

**Today's organizations are increasingly wanting to cater to the aspirations of its workforce. They are, in this process making changes in their work culture...**



**These changes are happening at a very gradual and incremental pace rather than being revolutionary.....**



**Business leaders increasingly trying to balance the aspirations of the workforce along with the methods of working that have delivered success in the past.**

**The only way to resolve this conflict is to have workspaces that could adapt to the newer changes while also support the existing work methods...**

**The solution lies in creating...**

**“ADAPTIVE WORKSPACES”**



**But..... What are ADAPTIVE WORKSPACES???**

**ADAPTIVE WORKSPACES** are workspaces which can.....



**Adapt to focused work styles as well as collaborative work styles**





**ADAPTIVE WORKSPACES** are workspaces which can.....



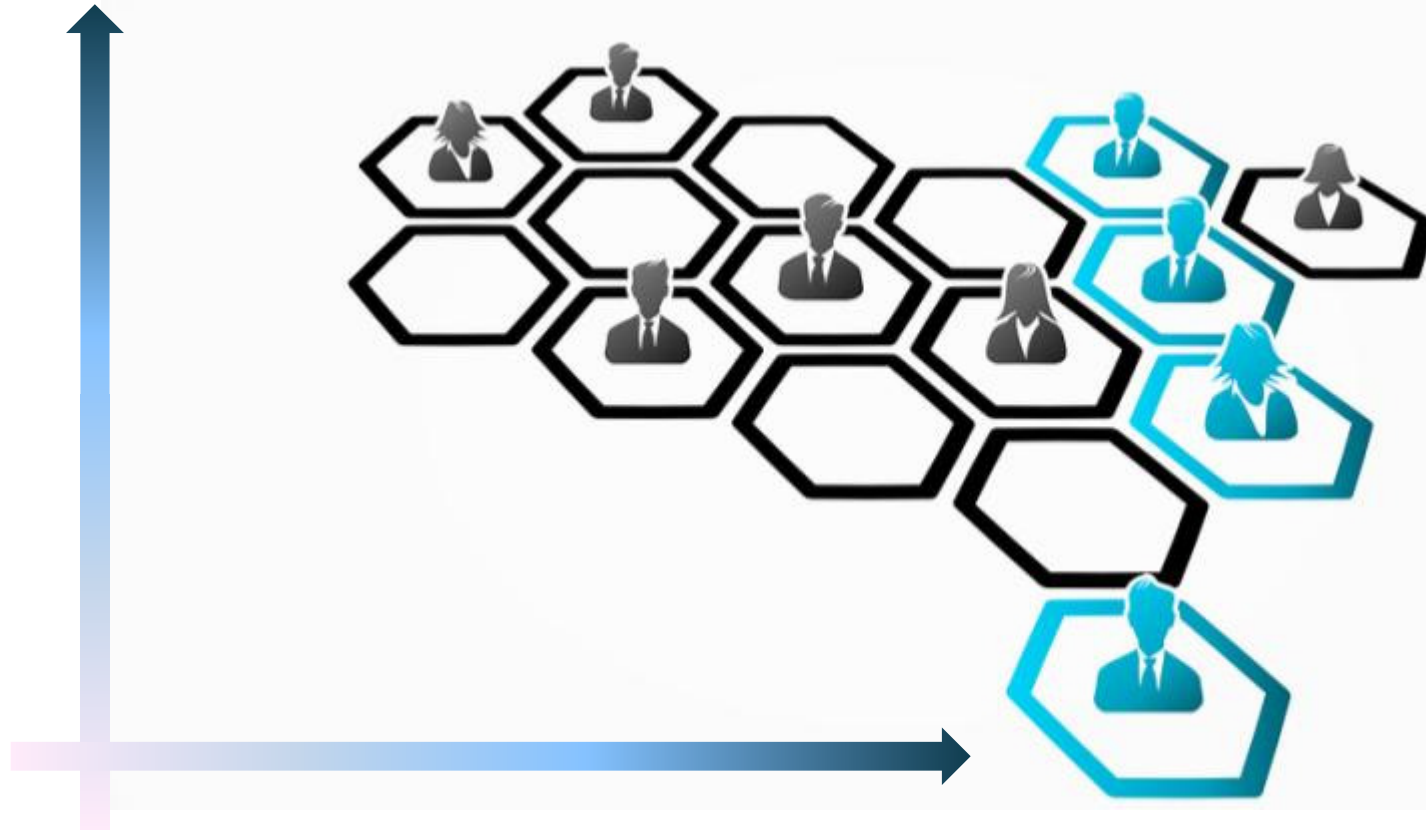
**Adapt to fixed workforce as well as the mobile workforce**

**ADAPTIVE WORKSPACES** are workspaces which can.....



**Adapt to physical storage as well as cloud storage**

**ADAPTIVE WORKSPACES** are workspaces which can.....



**Adapt to vertical as well as horizontal organizational structures**

**ADAPTIVE WORKSPACES** are workspaces which can.....



**Adapt to being formal as well as personalized to give that home-office feel**

---



**We, at Godrej Interio understand the aspirations of the workforce and the challenge that is on hand for business leaders.**

**We combined this with our knowledge of work spaces to bring to you.....**

**DFINE**

**For the adaptive workspace**

## **Adapt to focused work styles as well as collaborative work styles...**

Workstation configuration with sliding worktops and sliding monitor holder, enables the modules to be used for collaborative work when required and can be used as individual focused work tables when not in a meeting mode.



**DFINE**  
For Adaptive Workspace

**Adapt to interactions with real - time as well as virtual teams....**



With the provision of the meeting pods combined with possibility of having marker surfaces as well as screen mounting facility.

**DFINE**  
**For Adaptive Workspace**



## **Adapt to fixed workforce as well as the mobile workforce ...**

The credenza units double up as storage for CPU for desktop users and laptop storage for mobile laptop users making the same workstation suitable for fixed desktop users and mobile laptop users.



**DFINE**  
For Adaptive Workspace

**Adapt to physical storage as well as cloud storage...**



The credenza gives ample storage area for an individual's need of files as well as immediate stationery requirements which are inevitable in offices. Storage of CPU or laptop bags need not be thought about separately or added as an afterthought as the credenza also takes care of these.

**DFINE**  
**For Adaptive Workspace**

## **Adapt to vertical as well as horizontal organizational structures...**

Different configurations for team leaders seamlessly gel in with the employee modules catering to horizontal structures, while the cabin configurations provide the private offices needs for vertical structures.



**DFINE**  
Adaptive Workspace

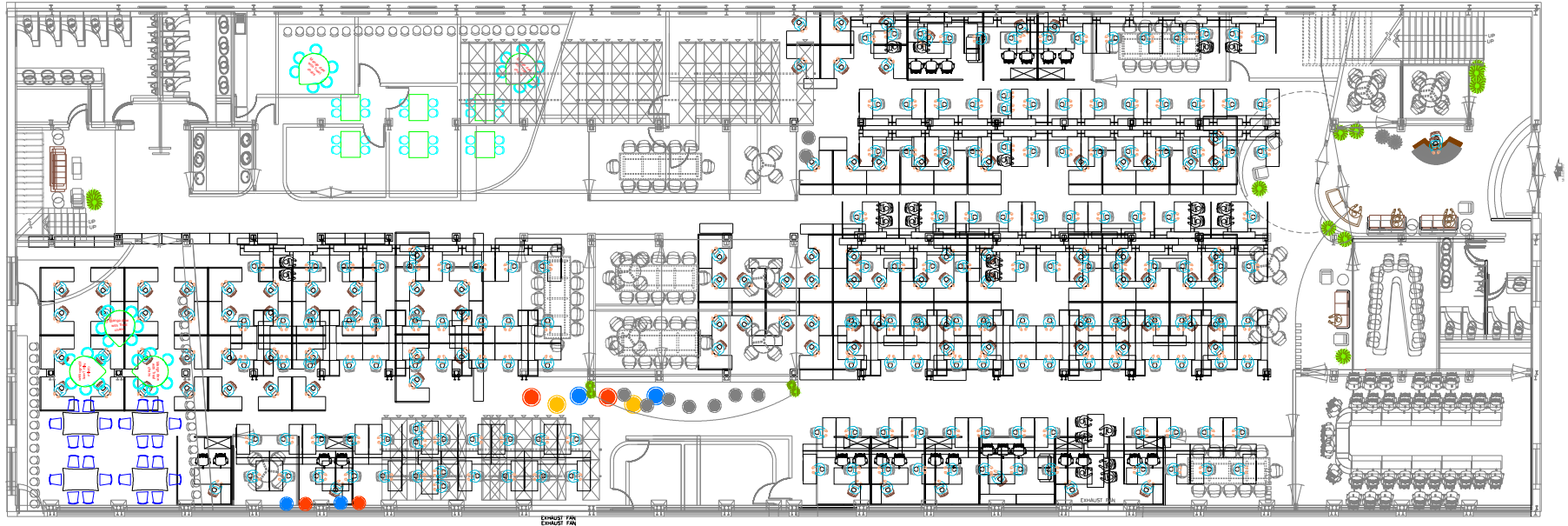
**Adapt to being formal as well as personalized to give that home-office feel...**



The shelf at the user level converts the formal workstation to a cozy ambiance of a home office, giving a possibility of personalizing the office workstation as per the users taste.

**DFINE**  
**For Adaptive Workspace**

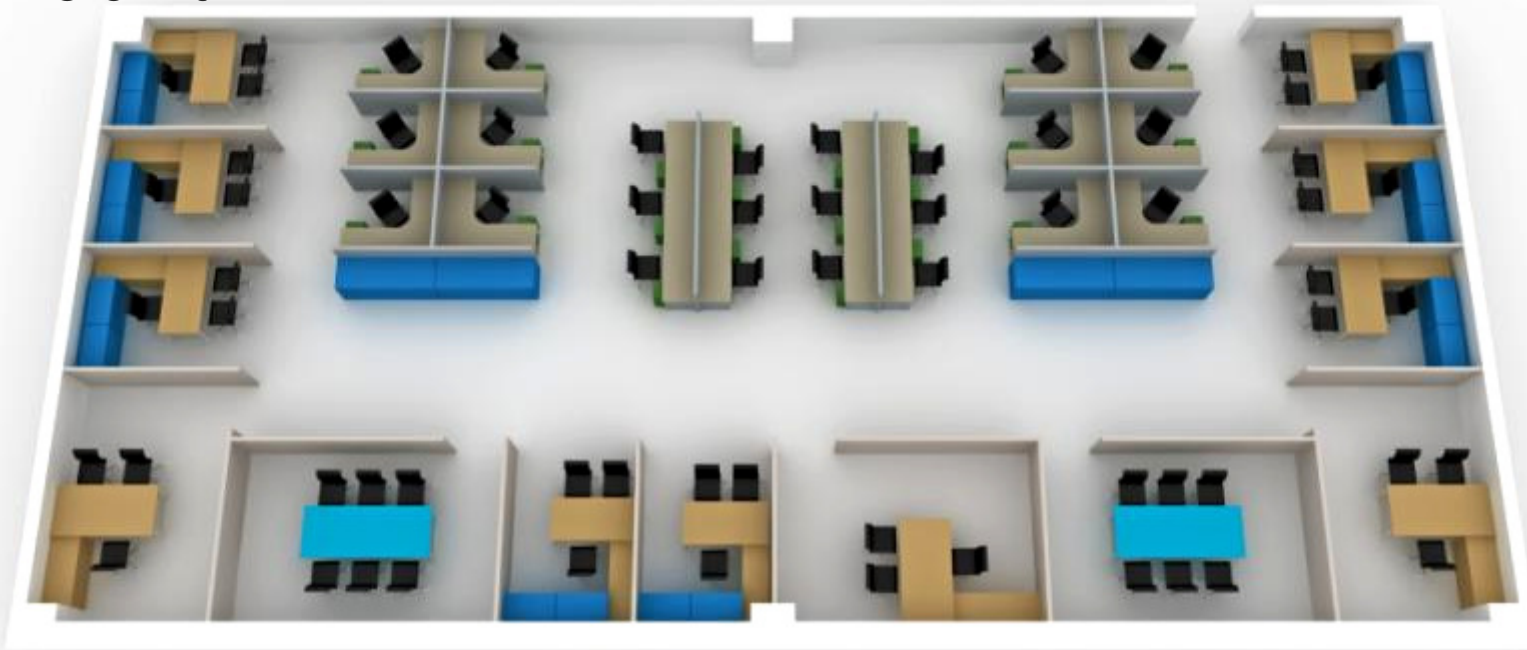
**Get more with DFINE....**



Move on from the conventional 5 x 5 penta workstation.....  
To the new workstation with side credenza in the same  
foot print..which takes care of the CPU, the primary  
storage for the user as well as the wire management.

**Plan your layout with a new perspective...**

Get more with DFINE.....



Floor Area = 277.50 m<sup>2</sup>  
Area / Person = 7.9 m<sup>2</sup>

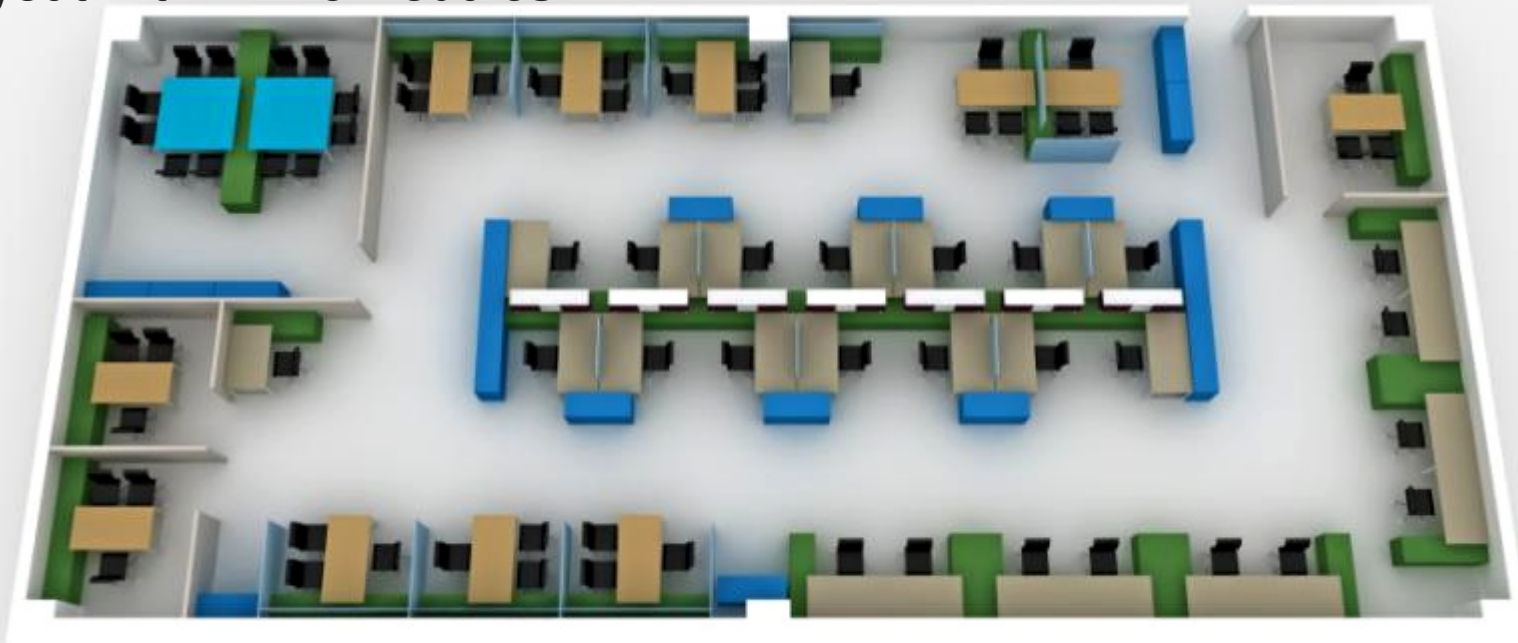
- Primary  
(Personal) Storage = 10.73 m<sup>3</sup>
- Secondary  
(Aisle) Storage = 3.24 m<sup>3</sup>

- 24 Employees
- 11 Managers
- 2 Conference Rooms (6 person capacity – Each)

In Conventional layout...



## Layout with D-fine Modules...



Floor Area = 277.50 m<sup>2</sup>  
Area / Person = 7.1 m<sup>2</sup>

- Primary  
Personal Storage = 21.67 m<sup>3</sup> 2.01 Times More
- Secondary  
(Aisle) Storage = 11.57 m<sup>3</sup> 3.57 Times More

- 26 + 4 Employees
- 11 Managers
- 1 Conference Room  
(12 person capacity)

\* Excluding the Conference Room Storage and Over-head display shelves

**DFINE**

**For the adaptive workspace**

**TRANSFORM YOUR LIFE**

*godrej* **interio**<sup>®</sup>