

godrej interio®

EDUCATION

SEGMENT STUDY
ACROSS
INDIA



East

Rourkela

NIT (National Institute of Technology)

DPS (Delhi Public School)

Bhubaneswar

NISER (National Institute of Scientific Education & Research)

ITER, SOA (Institute of Technical Education & Research)

IBCS (Institute of Business & Computer Sciences)

SPS (School of Pharmaceutical Studies)

South

Hyderabad

Arts College, Osmania University

College of Commerce & Business Management, Osmania University

CIEFL (Central Institute for English & Foreign Languages)

Pasha B.ed College

Chennai

Chennai Public School

Dr. M.G.R. University

S.R.M University

North

Delhi

IITD

Maitreyi College

National Law University

Netaji Subhash Institute of Technology

Shyama Prasad Mukherji College

West

Mumbai

Udayachal High School- Vikhroli

Hiranandani Foundation School- Powai & Thane

IITB - Indian Institute of Technology, Bombay

D.Y. Patil International School- Nerul

RAIT (Ram Rao Adik Institute of Technology)- Nerul

K.J Somaiya Institute of Management Studies & Research

SES School Thane

Pune

Mercedes Benz International School

Indus International School

Sharad Pawar International School

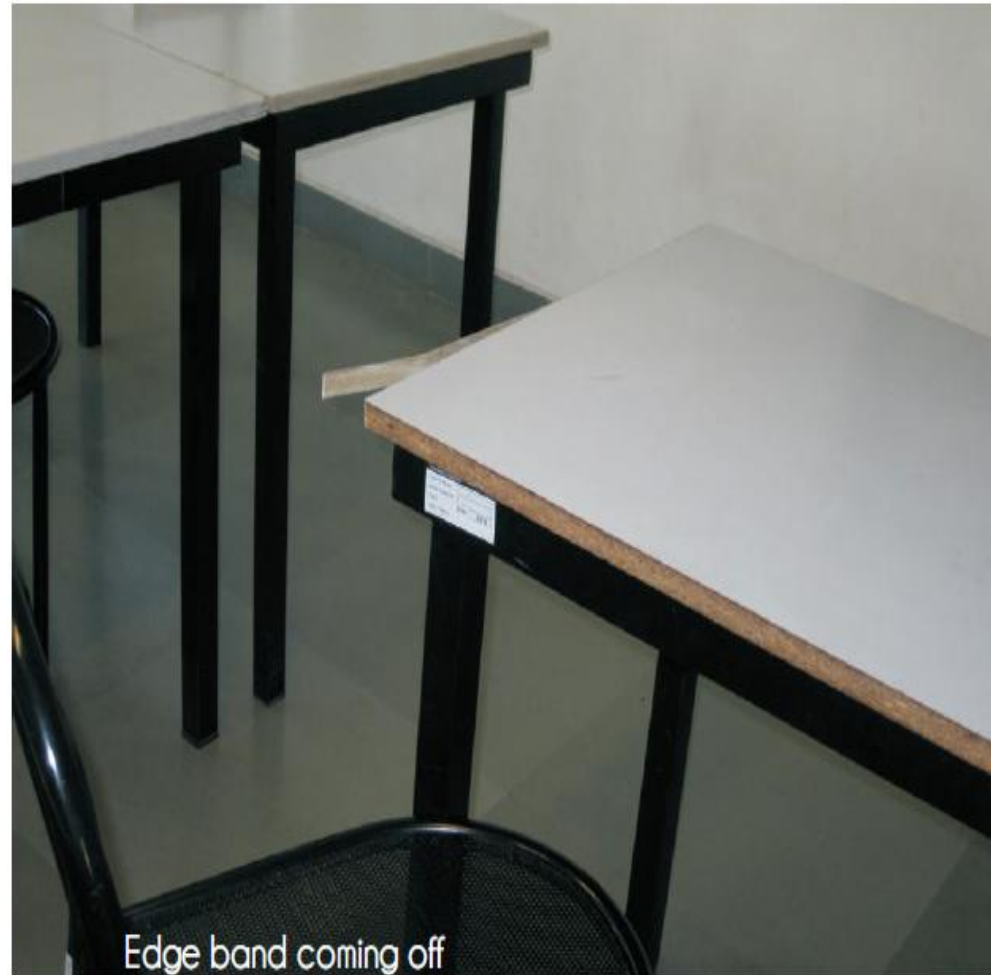
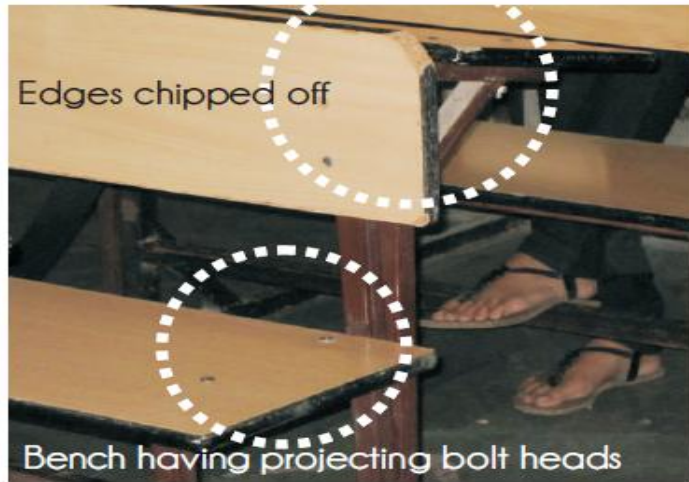
Lexicon International School



Case Study- Existing Classrooms

OBSERVATIONS ON SITE

PEELED EDGES



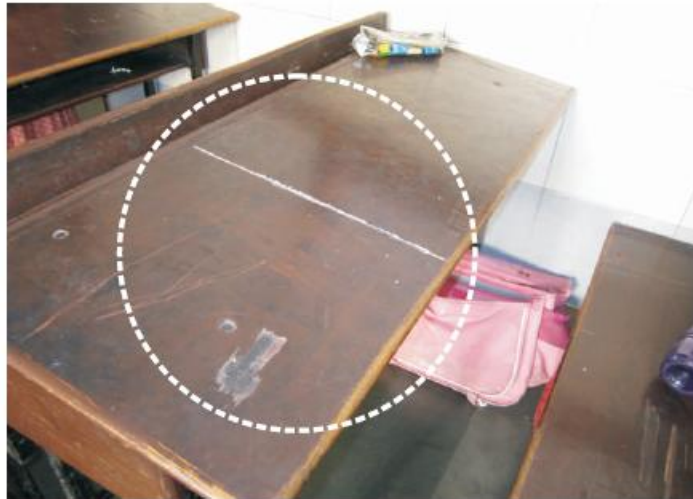
SHARP & UNSAFE CORNERS / EDGES



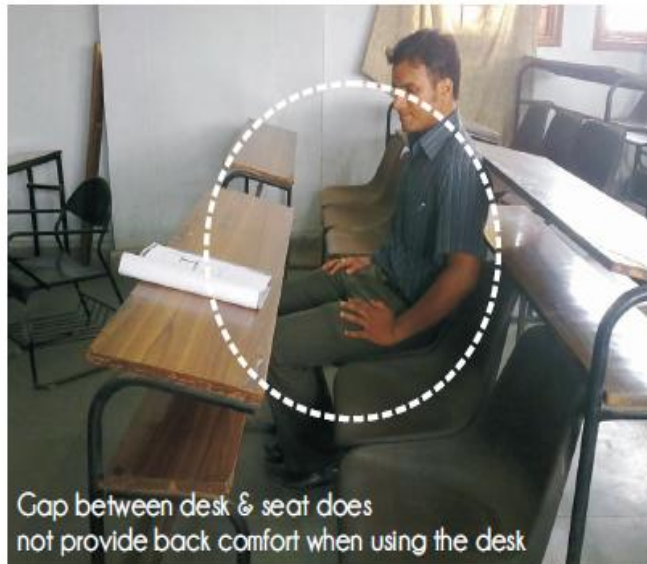
ABSENCE OF GLIDE SCREWS & DIFFICULTY IN CLEANING



VANDALISM



ANTHROPOMETRIC CONCERNS



DIFFERENT DESIGNS ACROSS CLASSES



Hindustan University, Chennai – having different models of SDCB in different classes

INTRODUCING GENII



SO **TOUGH**,
IT CAN PASS ANY TEST.



genij

THE ADVANTAGE

TOUGH ON
SCRATCHES -
SOFT ON KIDS

Round Edges

No Projections Of Hardware



genij

GOODBYE to PEELED Furniture !!!

Genii comes in a **COMPACT LAMINATE** OPTION which is **NON – LIPPED**.

So its Time to say Good bye to all the lipping peeling off problems.

Your Class will remain YOUNG for years to come



Also available in Pre-Laminated Twin option

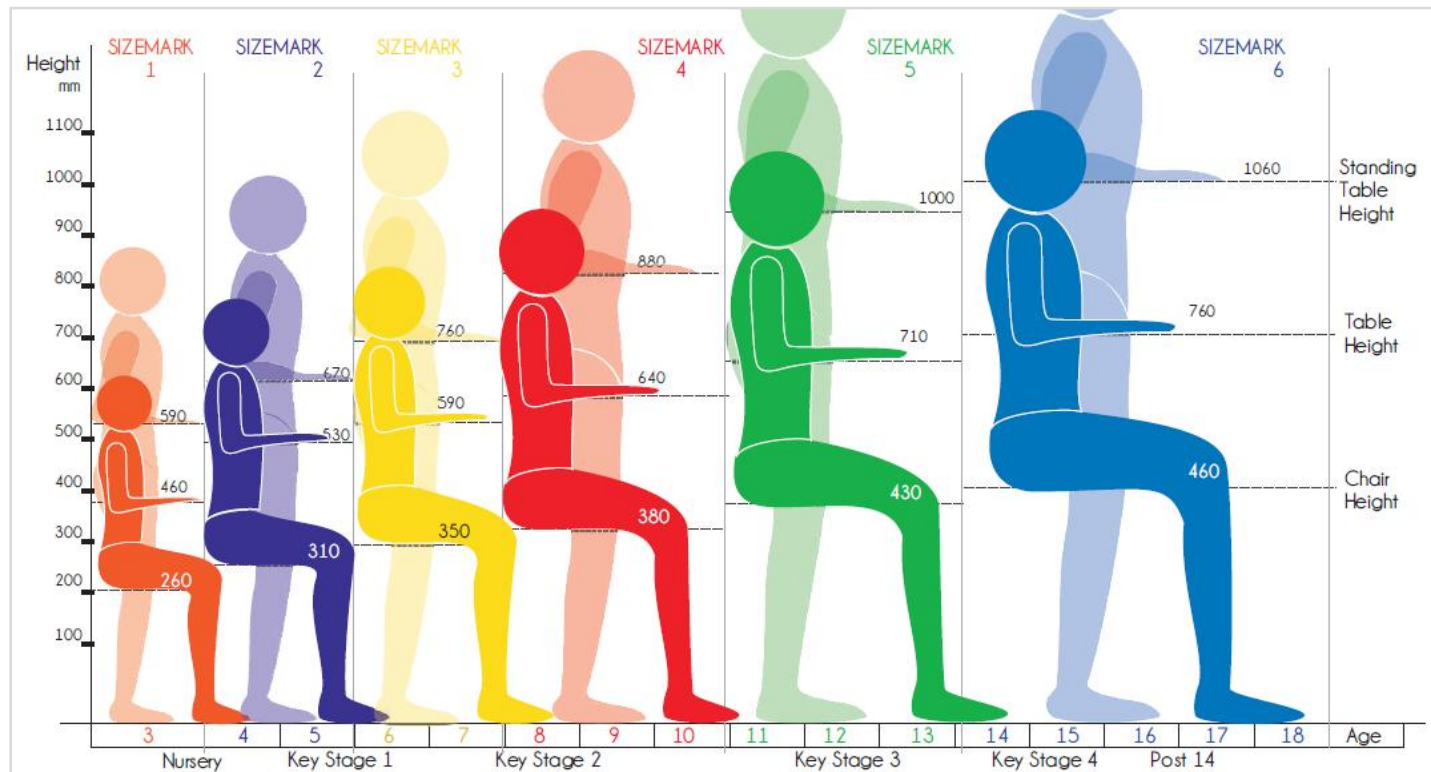


SAME DESIGN FOR ALL CLASSES

GENII comes in **ERGONOMIC sizes** for kids in **DIFFERENT AGE GROUPS**.

These size marks are derived from the BIS standards.

Hence a Goodbye to the NON STANDARDS, NON ERGONOMIC OPTIONS !!



SAME DESIGN FOR ALL CLASSES

3 Size options derived from BIS Standards

- Size Mark 3: Grade 5th to 7th
- Size Mark 4: Grade 7th to 10th
- Size Mark 5: Grade 10th to 12th

DIMEN SIONS	SIZE MARK 3			SIZE MARK 4			SIZE MARK 5		
FRONT MODULE									
	1 SEAT	2 SEAT	3 SEAT	1 SEAT	2 SEAT	3 SEAT	1 SEAT	2 SEAT	3 SEAT
W 1	580	900	1350	520	1000	1500	580	1100	1650
D 1	400	400	400	400	400	400	400	400	400
H 1	587	587	587	587	587	587	587	587	587
MIDDLE MODULE									
W 2	580	900	1350	560	1000	1500	580	1100	1650
D 2	330	330	330	330	330	330	330	330	330
H 2	347	347	347	387	387	387	427	427	427
W 2	580	900	1350	580	1000	1500	580	1100	1650
D 2	330	330	330	330	330	330	330	330	330
H 2	347	347	347	387	387	387	427	427	427
D 3	195	195	195	195	195	195	195	195	195
W 3	620	940	1390	620	1040	1540	620	1140	1690
REAR MODULE									
W 2	580	900	1350	580	1000	1500	580	1100	1650
D 2	330	330	330	330	330	330	330	330	330
H 2	347	347	347	387	387	387	427	427	427
W3	620	940	1390	620	1040	1540	620	1140	1690
D 3	195	195	195	195	195	195	195	195	195

NOTE: 3 seater is not applicable for COMPACT LAMINATE module. * In case of all compact laminate modules, H will be -7 mm

KIDS WILL BE KIDS **REAL STURDY** GENII



genii

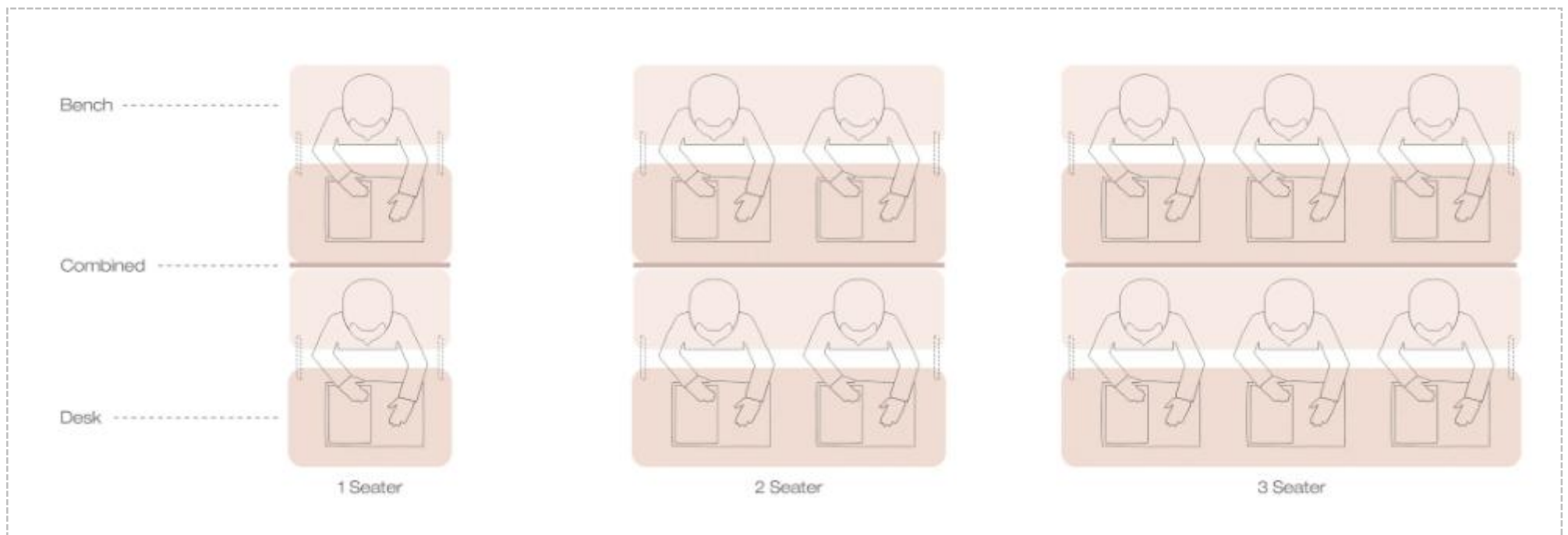
FUNCTIONAL DESIGN.....

Hooks & Shelf
for storage of
Books, Bags, etc



genii

MEET ALL REQUIREMENTS.....



AVAILABLE IN SINGLE, 2 & 3 SEATER MODULES.....





WITH THE GREEN ADVANTAGE !!

CERTIFICATE OF COMPLIANCE



**GODREJ & BOYCE MFG.
CO. LTD.**
GENII

59666-420

Certificate Number

08/27/2014 - 10/30/2015

Certificate Period

Certified

Status

UL 2818 -2013 Gold Standard for Chemical Emissions for Building Materials, Finishes and Furnishings

Product tested in accordance with UL 2818 test method to show compliance to emission limits on UL 2818, Section 7.1 and 7.2.

Commercial furniture and furnishings are tested in accordance with ANSI/BIFMA M7.1-2011 and determined to comply with ANSI/BIFMA X7.1-2011 and ANSI/BIFMA e3-2011 Credit 7.6.1, 7.6.2, and 7.6.3. Panel based workstations are modeled in the open plan environment. Casework systems are modeled in the private office environment. Products also determined compliant in accordance with California Department of Public Health (CDPH) Standard Method V1.1-2010. Educational furniture is modeled in the classroom environment. Residential furniture is modeled in the residential bedroom environment.



Environment

FOR PRE-LAMINATED OPTION ONLY

GENII PROMOTIONS ON THE WEBSITE

[Need Help?](#)
[Godrej Group](#)

[BROWSE BY CATEGORY](#)

[ABOUT US](#)
[BRIGHTER LIVING](#)
[INTERIOR](#)
[EXPORT](#)
[MEDIA](#)
[CAREER](#)
[CONTACT US](#)

**GENII.
SO TOUGH
IT CAN PASS
ANY TEST.**

**ASIA'S MOST
PROMISING
BRAND 2012-13**

Call us

1-800-267-1122

Join us

[Facebook](#)
[Twitter](#)

[Youtube](#)
[LinkedIn](#)

[Pinterest](#)

Need Help ?

[Contact us](#)
[Dealer Locator](#)

Product Categories

Bed Room Bedroom Concepts Beds Cupboards	Living Room Sofas Coffee Tables Wall Units TV Trolleys Occasional Furnitures	Study Room Computer Furniture Study Centers	Dining Room Dining Sets Dining Tables Dining Chairs	Kids Room Kids Furniture	Kitchen Kitchen Layouts Accessories Units Shade Cards
Mattress How to select Right mattress Latex Mattress Spring Mattress Coil and Foam Mattress Bed Accessories Mattress Care Guide	Home Accessories Potpourri Candles & incense sticks Bean Bags Bed Linen Picture Frames	Desking Premium Suites Cabin Furniture Executive Series Office Desks Conference Rooms Training Room Tables	Modular Furniture Portable Systems Desk Based Systems Tiles Based Systems Column Based System Modular Storage	Seating General Purpose chairs High Performance Lounge Furniture Multi Task Multipurpose Chairs Seating Section	Storage Archival Storage Aisle and Back Storage Personal Storage Display Storage Classic Storages

On **You Tube** & OTHER DIGITAL MEDIA

VIDEOS FOR YOUTUBE



THANK YOU !!