

Add a **Vintage Touch**
to your office now!

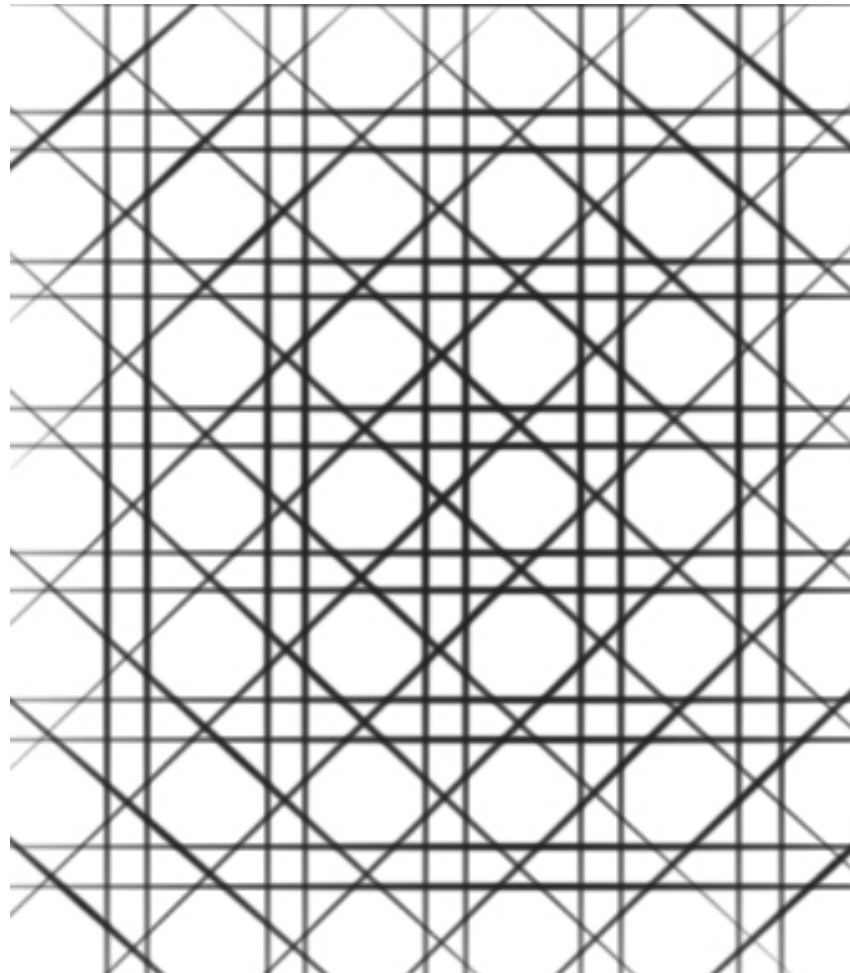
BREEZE

20th Century Designs

Tubular steel furniture designs are the milestones for early 20th century designs



Caned Look of the Past



D E S I G N

An initiative by
godrej interio



Vintage is back
In *-fashion*



Be on the watch

D E H Q I G N

An initiative by
godrej interio



Vintage is back
In *fashion*



Be on the watch

D E H Q I G N

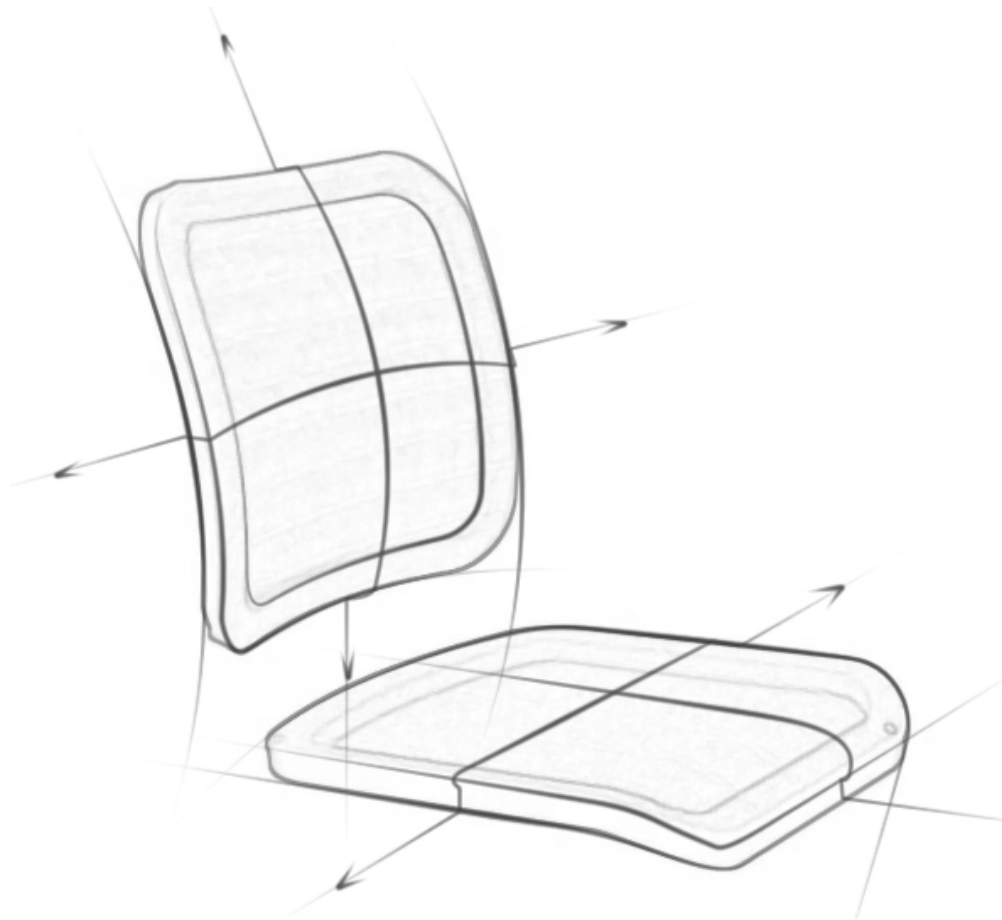
An initiative by
godrej interio



Vintage is back
In *-fashion*

Be on the watch

Breeze – Light and airy






OFFICES WILL SOON GET A VINTAGE TOUCH.



REINTRODUCING THE BREEZE COLLECTION.

Vintage is back. We are bringing the first chair to be designed by Godrej in a new avatar. By blending the latest trends in aesthetics with new materials and manufacturing technology, the BREEZE collection offers beauty, performance and unmatched comfort in its class, while maintaining its original look.

Experience the old times with the new and improved BREEZE.



“Breeze”..... designed to suit the discerning customer



- VINTAGE feel
- Aesthetics reflecting IMAGE
- Perfect FINISH
- ERGONOMIC design
- Durable- long life, LOW Maintenance
- ECO-FRIENDLY product

Breeze

The BREEZE chair is another example of Godrej Interio's leadership in applying Ergonomic principles and concern for Environment in the Design of seating products.

Blending the latest trends in Aesthetics with New Materials and Manufacturing Technology, BREEZE chair range offers Beauty, Performance and Unmatched Comfort in its class.....

It's a great choice for Open offices, Meeting Waiting areas and Casual seating environments.

Reflecting your IMAGE and appreciation of Great Design !!



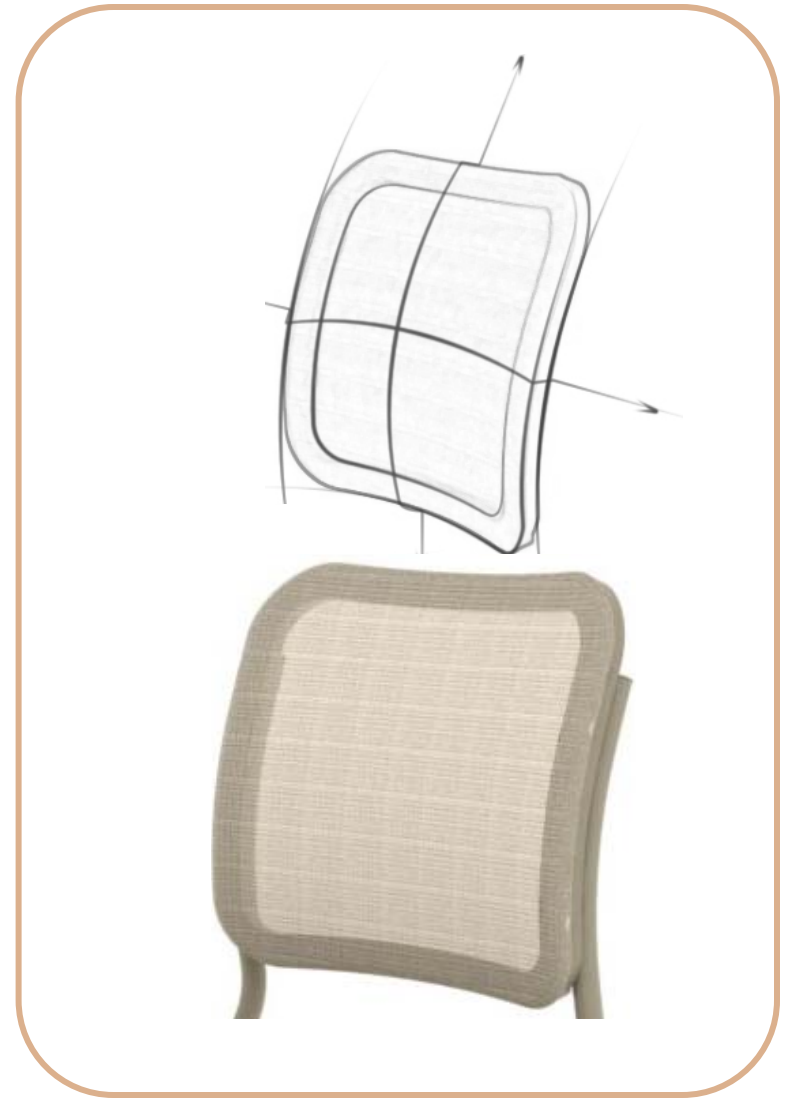
Breeze - Designed to project your IMAGE

- NEW AGE materials- GF Polyamide base frame and PP inner frame for superior Strength and Finishing.
- EUROPEAN Polyester Structural Mesh upholstery fixed with RF Welding technology ~ for superior Strength and Long Life.
- WELDED Tubular understructure - with NO sharp edges/ joineries ~ ensuring Clean Looks and User Safety throughout lifetime of product.
- TRENDY COLORS in Mesh / powder coating for Enhanced Aesthetics.



Breeze – Ergonomics with User Comfort!

- ERGONOMICALLY contoured hyperbolic parabolic back design provides excellent full back support to the user.
- WATERFALL seat design ensures proper blood circulation to lower legs and long term seating comfort.
- Polyester STRUCTURAL MESH which distributes your weight equally for optimum user comfort.
- Open mesh design allows EASY AIR FLOW to keep your body cool even in non AC environment.



Breeze – Low Maintenance!



Very Light Weight
Easier to handle chair



**Mould Resistant –
Fungicide Treated**



Flexibility for optimum
comfort



Fabric remains cool even
in non AC environment



Quick Drying thanks
to its calibrated open
Weave.



**Easy Care: Just wash
with soapy water**



**Outstanding resistance
to tearing.**

Breeze – is Eco Friendly !!



- Breeze is made from 98% recyclable materials !
- Manufactured in ISO 18001 certified factory – water used in powder coating process & waste from injection molding process is 100% recycled.
- SUSTAINABLE TRANSPORTATION: BREEZE comes in pack of **FOUR** and its packaging / carton is designed to facilitate maximum space utilization in transport.
- END OF LIFE: Can be easily recycled using WECYCLE Service from Godrej Interio.



Breeze – Range !!



Breeze 1

Breeze 1A

Breeze – Range !!



Breeze 2

Breeze 2A

Breeze – Detailed Material Specification

COMPONENT	MATERIAL
SEAT/BACK FABRIC	Polyester Structural Mesh
SEAT/BACK FRAME	Outer: GF Polyamide. Inner : PP
ARMREST (for 1A/2A)	PP
TUBULAR FRAME	High Strength Micro Alloy MS Tubes

Breeze – Preventive Guidelines for Trouble free Service

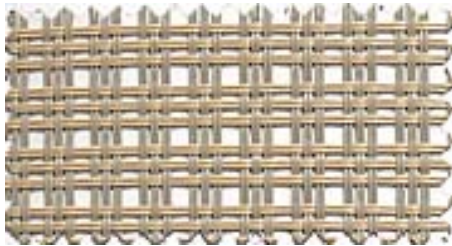
- The product is suitable for INDOOR USE only.
- Use chair only for proper seating ~ Do not stand on the chair,
- Do not sit on the back/armrest of the chair.
- Do not use metallic brush and abrasive products to clean the chair.
- Do not lean chair on two back legs ~ The chair must be used with all its four legs resting on the floor at all times.
- For major maintenance or repairs, consult Godrej Interio Service Personnel.

Breeze – Colour Combination



Mesh : WAFFLE

Paint : SILVER CLOUD



Mesh : SILVER WEFT

Paint : BROWNIE

Colors shades shown are representative only.
Please review actual samples for final selection.



Thank You.....

© Godrej Interio, **Godrej & Boyce Mfg. Co. Ltd, Mumbai, India, 2012-13**

Godrej & Boyce Mfg. Co. Ltd, Mumbai, India reserves all rights whatsoever in the document. **Godrej & Boyce Mfg. Co. Ltd, Mumbai, India** asserts its rights over the document that has been conceived by the dint of its efforts also views reproduction of the document, as is or by making cosmetic or other changes, as a violation of its copyright. No part of the document shall be copied or reproduced without the written approval of **Godrej & Boyce Mfg. Co. Ltd, Mumbai, India**.

